

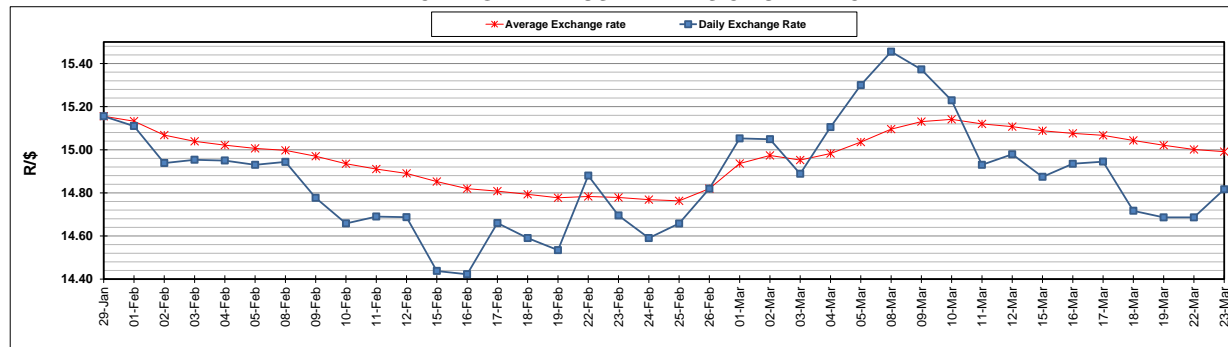
	PETROL 95 ULP	PETROL 93 ULP & LRP	DIESEL 0.05%	DIESEL 0.005%	ILL. PAR.
GAUTENG PUMP PRICE (SA c/l) AS FROM 03/03/2021	1,632.000	1,615.000	-	-	-
WHOLESALE PRICE (SA c/l) AS FROM 03/03/2021	-	-	1,412.420	1,416.820	845.688
SINGLE NATIONAL MAXIMUM RETAIL PRICE	-	-	-	-	1,071.000
BASIC FUEL PRICE - 23/03/2021 (SA c/l)	696.757	681.867	645.196	647.748	623.426
PRESS RELEASE CONTRIBUTION TO BFP 03/03/2021 - 23/03/2021 (SA c/l)	665.170	658.170	653.630	658.030	633.128
UNIT OVER/(UNDER) RECOVERY - 23/03/2021 (SA c/l)	(31.587)	(23.697)	8.434	10.282	9.702
AVERAGE BASIC FUEL PRICE 26/02/2021 - 23/03/2021	732.922	721.700	693.280	696.018	670.821
AVERAGE UNIT OVER/(UNDER) RECOVERY 26/02/2021 - 23/03/2021	(78.586)	(74.363)	(48.650)	(47.321)	(45.526)

### ANALYSIS MOVEMENT OF AVERAGE OVER/(UNDER) RECOVERY

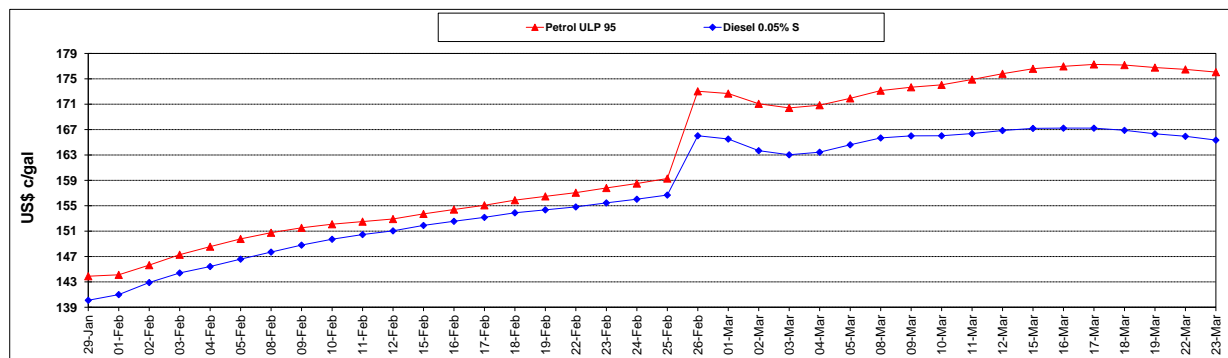
	PETROL 95	PETROL 93	DIESEL 0.05%	DIESEL 0.005%	ILL. PAR.
- MOVEMENT IN INTERNATIONAL PRODUCT PRICES	(67.438)	(63.387)	(38.106)	(36.735)	(35.323)
- MOVEMENT IN EXCHANGE RATE	(11.147)	(10.976)	(10.544)	(10.586)	(10.203)
AVERAGE UNIT OVER/(UNDER) RECOVERY 26/02/2021 - 23/03/2021	(78.586)	(74.363)	(48.650)	(47.321)	(45.526)

### R/\$ EXCHANGE RATE - (R/\$14.8165 - 23/03/2021)

#### EXCHANGE RATE USED IN BASIC FUEL PRICE



#### INTERNATIONAL PRODUCT PRICES OF BASKET USED IN BASIC FUEL PRICE



#### BASIC FUEL PRICE IN SA CENTS PER LITRE

